

B O M B A Y



simpa



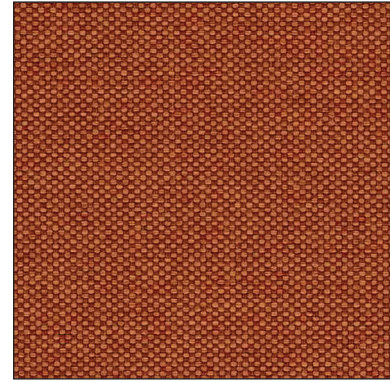
01



02



04



39



06



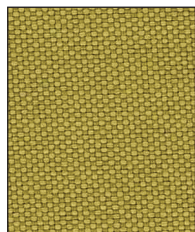
14



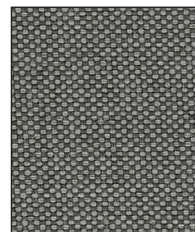
15



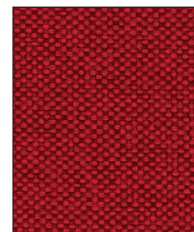
24



25



26



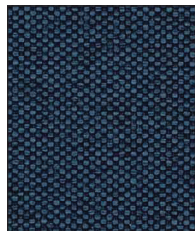
33



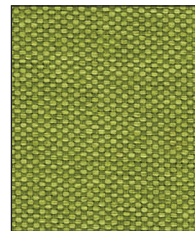
34



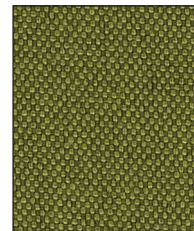
36



37



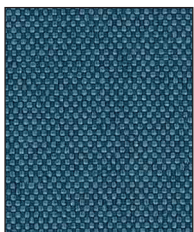
38



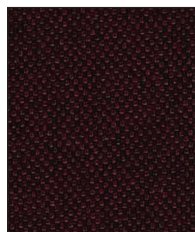
48



56



57



63



64



69



73



74



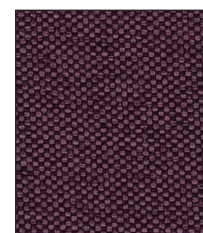
79



84



89



99

BOMBAY			
COMPOSITION SURFACE/BACK ZUSAMMENSETZUNG DER OBERE/UNTERE SEITE COMPOSIZIONE TESSUTO SUPERIORE/INFERIORE		100% POLYESTER / 100% POLYESTER 100% POLYESTER / 100% POLYESTER 100% POLIESTERE / 100% POLIESTERE	
WIDTH BREITE ALTEZZA	140 cm +/-2%	WEIGHT GEWICHT PESO	350 gr/m ² +/-5%
TEST	STANDARD	RESULTS/ERGEBNIS/RISULTATI	
		WARP/KETTE/ORDITO	WEFT/SCHUSS/TRAMA
ELONGATION AUSDEHNUNG RESISTENZA ALLA TRAZIONE	EN ISO 13934-1	57,60%	27,90%
TEAR STRENGTH WEITERREISSFESTIGKEIT RESISTENZA ALLA LACERAZIONE	EN ISO 13937-3	234,9 N / 5cm	129,3 N / 5cm
RESISTANCE TO SEAM SLIPPAGE NAHTSCHIEBEWIDERSTAND RESISTENZA ALLO SCORRIMENTO DELLA CUCITURA	EN ISO 13936-2	2 mm	2,3 mm
ABRASION RESISTANCE SCHEUERBESTAENDIGKEIT RESISTENZA ALL'ABRAZIONE	EN ISO 12947-1 EN ISO 12947-2	>100.000 MD	
PILLING RESISTANCE PILLBILDUNG RESISTENZA AL PILLING	EN ISO 12945-2	4	
COLOUR FASTNESS TO LIGHT LICHTECHTHEIT RESISTENZA ALLA LUCE	EN ISO 105-B02 METHOD 2	5	
COLOUR FASTNESS TO RUBBING REIBECHTHEIT RESISTENZA DEL COLORE ALL'ABRAZIONE	EN ISO 105-X12	DRY/TROCKEN/SECCO	WET/NASS/UMIDO
		5	5
CONTAIN OF AZO DYES AZOFARBSTOFFE CONTENUTO DI COLORANTI AZOICI	§ 64 LFGB 82.02-2, 3, 4, 9 (Commodity act)	NOT DETECTABLE NICHT NACHWEISBAR NON RILEVABILE	
ALERGY CAUSING DYES ALLERGISIERENDE FARBSTOFFE CONTENUTO DEI COLORANTI ALLERGENICI	Thin layer chromotography TLC and HPLC with DAD (UV/Vis-detector)	NOT DETECTABLE NICHT NACHWEISBAR NON RILEVABILE	
FORMALDEHYDE FORMALDEHYD FORMALDEIDE	EN ISO 14184-1	PASSED BESTANDEN SUPERATO	
FIRE RETARDANT: BRENNVERHALTEN: IGNIFUGO:	BS 5852 source 0 - without soaking	PASSED UEBERSTANDEN SUPERATO	
FABRIC PROTECTION: STOFFSCHUTZ: PROTEZIONE TESSUTO:	WATER REPELLENT WASSERABWEISEND IDROREPELLENTE		

COLOUR DIFERENCES BETWEEN DYING LOTS ARE POSSIBLE
FARBNIANSEN SIND MOEGLICH
TRA I VARI LOTTI POSSONO VERIFICARSI DELLE VARIAZIONI NEL COLORE

